



## Recombinant Human Serum Albumin (rHSA)

Catalog #OsrHSA

### Product Description

Human serum albumin (HSA) is the most abundant protein found in human blood plasma. It is produced in the liver. The biological functions of albumin include normalization of the colloidal osmotic blood pressure and transportation and metabolization of endogenous and exogenous molecules (e.g. fatty acids, amino acids, steroids, hormones, metals) and pharmaceutical drugs. Recombinant human serum albumin (rHSA) is genetically engineered and derived from a rice-based expression system. It is a highly purified and completely animal-, virus-, and bacteria-free product that was developed as an alternative to plasma-derived HSA, to which it is structurally equivalent.

### Advantages and Applications

rHSA is plant-derived, which eliminates the risk of bacterial and viral contaminations. Additionally, the greater consistency of rHSA saves time while providing better performance. Finally, the low price of rHSA allows for a reduction in downstream product cost without sacrificing the quality. rHSA is suitable as a cell culture media supplement to promote cell growth and increase recombinant protein yield. It can also be used as an additive for reduced-serum or serum-free culture media and in the cryopreservation of cells. rHSA is also ideal for reference applications, such as electrophoresis, when protein contaminants are not desired. It can also be used as a blocking agent in Western blots and ELISA applications.

### Product Specifications

Source:	<i>Oryza sativa</i> (rice grain)
Purity:	≥ 99% by SEC-HPLC (Figure 1)
Physical Appearance:	Off-white lyophilized powder
Endotoxin:	< 0.005EU/μg

### Product Use

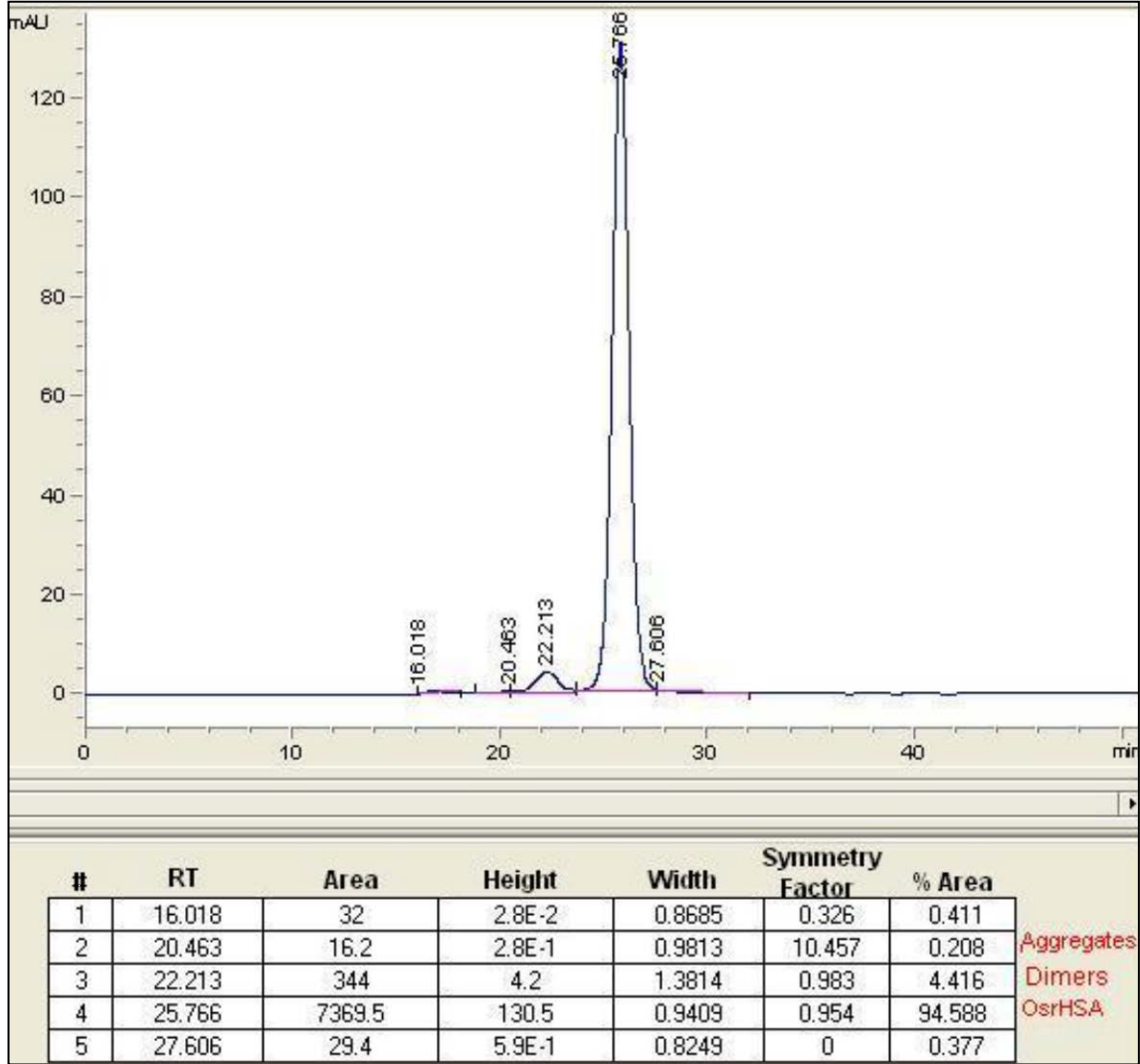
OsrHSA is for research use only. It is not approved for human or animal use, or for application in clinical or *in vitro* diagnostic procedures.

### Storage and Stability

Store at 2-8°C. Reconstitute in sterile water or saline. Aqueous aliquots stored at -20°C are stable for several months. Repeated freeze-thaw of solutions is not recommended.

### Shipping

Room temperature.



**Figure 1**

*Caution: If handled improperly, some components of this product may present a health hazard. Take appropriate precautions when handling this product, including the wearing of protective clothing and eyewear. Dispose of properly.*