



GeneQuery™ Human Preadipocyte Cell Biology qPCR Array Kit (GQH-PAD) Catalog #GK103

Product Description

Preadipocytes are fibroblast-like precursor cells that can proliferate and differentiate into mature adipocytes. Preadipocytes play an important role in metabolic homeostasis and nutrient signaling. ScienCell's GeneQuery™ Human Preadipocyte Cell Biology qPCR Array Kit (GQH-PAD) is designed to facilitate gene expression profiling of 88 key genes involved in human preadipocyte cell biology, such as cell proliferation, differentiation, ECM formation and lipid metabolism. Genes implicated in obesity and liposarcoma are also included in the array. Brief examples of how genes may be grouped according to their functions are shown below:

- **Preadipocyte cell markers:** ADIPOQ, LEP, HOXC8/9, TBX1, TMEM26, UCP1, CIDEA, PRDM16, SLC7A10, P2RX5
- **Proliferation:** CCND1, PROKR1, LYRM1, FTO, SLC2A4, PDGFA, IL4, IGF1, FGF5, MAPK1/3, TNFSF10
- **Differentiation and adipogenesis:** PPARG, CEBPA/B, KLF2/5/15, SOCS1/3, INSR, DLK1, ADD1, SREBF1
- **ECM and cytoskeleton:** MMP1/2/3, FAP, DPP4, TGFB1, COL1A1/2, SMAD2/4
- **Lipid metabolism:** FABP5/7, LBP, LPL, PLIN2, ACSL1, LIPC
- **Obesity:** MC4R, UCP3, ADRB2/3, POMC, FFAR4, CARTPT
- **Liposarcoma:** FUS, MDM2, HMGA2, DDIT3, CDK4, EWSR1, DES, VIM

Note: all gene names follow their official symbols by the Human Genome Organization Gene Nomenclature Committee (HGNC).

GeneQuery™ qPCR array kits are qPCR ready in a 96-well plate format, with each well containing one primer set that can specifically recognize and efficiently amplify a target gene's cDNA. The carefully designed primers ensure that: (i) the optimal annealing temperature in qPCR analysis is 65°C (with 2 mM Mg²⁺, and no DMSO); (ii) the primer set recognizes all known transcript variants of target gene, unless otherwise indicated; and (iii) only one gene is amplified. Each primer set has been validated by qPCR with melt curve analysis, and gel electrophoresis.

GeneQuery™ qPCR Array Kit Controls

Each GeneQuery™ plate contains eight controls (Figure 1).

- Five target housekeeping genes (β -actin, GAPDH, LDHA, NONO, and PPIH), which enable normalization of data.
- The Genomic DNA (gDNA) Control (GDC) detects possible gDNA contamination in the cDNA samples. It contains a primer set targeting a non-transcribed region of the genome.
- Positive PCR Control (PPC) tests whether samples contain inhibitors or other factors that may negatively affect gene expression results. The PPC consists of a predisposed

synthetic DNA template and a primer set that can amplify it. The sequence of the DNA template is not present in the human genome, and thus tests the efficiency of the polymerase chain reaction itself.

- The No Template Control (NTC) is strongly recommended, and can be used to monitor the DNA contamination introduced during the workflow such as reagents, tips, and the lab bench.

Kit Components

Component	Quantity	Storage
GeneQuery™ array plate with lyophilized primers	1	4°C or -20°C
Optical PCR plate seal	1	RT
Nuclease-free H ₂ O	2 mL	4°C

Additional Materials Required (Materials Not Included in Kit)

Component	Recommended
Reverse transcriptase	MultiScribe Reverse Transcriptase (Life Tech, Cat. #4311235)
cDNA template	Customers' samples
qPCR master mix	FastStart Essential DNA Green Master (Roche, Cat. #06402712001)

Quality Control

All the primer sets are validated by qPCR with melt curve analysis. The PCR products are analyzed by gel electrophoresis. Single band amplification is confirmed for each set of primers.

Product Use

GQH-PAD is for research use only. It is not approved for human or animal use, or for application in clinical or *in vitro* diagnostic procedures.

Shipping and Storage

The product is shipped at ambient temperature. Upon receipt, the plate should be stored at 4°C and is good for up to 12 months. For long-term storage (>1 year), store the plate at -20°C in a manual defrost freezer.

Procedures

Note: The primers in each well are lyophilized.

1. Prior to use, allow plates to warm to room temperature.
2. Briefly centrifuge at 1,500x g for 1 minute before slowly peeling off the seal.
3. Prepare 20 μ l PCR reactions for one well as shown in Table 1.

Table 1

cDNA template	0.2 – 250 ng
2x qPCR master mix	10 μ l
Nuclease-free H ₂ O	variable
<i>Total volume</i>	<i>20 μl</i>

Important: *Only use polymerases with hot-start capability to prevent possible primer-dimer formation. Only use nuclease-free reagents in PCR amplification.*

4. Add the mixture of 2x qPCR master mix, cDNA template, and nuclease-free H₂O to each well containing the lyophilized primers. Seal the plate with the provided optical PCR plate seal.

Important: *In NTC control well, do NOT add cDNA template. Add 2x qPCR master mix and nuclease-free H₂O only.*

5. Briefly centrifuge the plates at 1,500x g for 1 minute at room temperature. For maximum reliability, replicates are strongly recommended (minimum of 3).
6. For PCR program setup, please refer to the instructions of the master mix of the user's choice. We recommend a typical 3-step qPCR protocol for a 200nt amplicon:

Three-step cycling protocol

Step	Temperature	Time	Number of cycles
Initial denaturation	95°C	10 min	1
Denaturation	95°C	20 sec	40
Annealing	65°C	20 sec	
Extension	72°C	20 sec	
Data acquisition	Plate read		
<i>Recommended</i>	<i>Melting curve analysis</i>		1
Hold	4°C	Indefinite	1

7. (Optional) Load the PCR products on 1.5% agarose gel and perform electrophoresis to confirm the single band amplification in each well.

Figure 1. Layout of GeneQuery™ qPCR array kit controls.

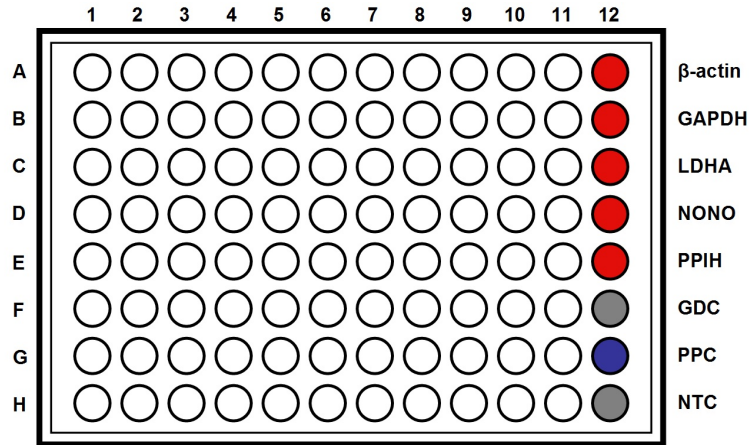


Table 2. Interpretation of control results:

<i>Controls</i>	<i>Results</i>	<i>Interpretation</i>	<i>Suggestions</i>
Housekeeping gene controls	Variability of a housekeeping gene's Cq value	The expression of the housekeeping gene is variable in samples; cycling program is incorrect	Choose a constantly expressed target, or analyze expression levels of multiple housekeeping genes; use correct cycling program and make sure that all cycle parameters have been correctly entered
gDNA Control (GDC)	$Cq \geq 35$	No gDNA detected	N/A
	$Cq < 35$	The sample is contaminated with gDNA	Perform DNase digestion during RNA purification step
Positive PCR Control (PPC)	$Cq > 30$; or The Cq variations > 2 between qPCR Arrays.	Poor PCR performance; possible PCR inhibitor in reactions; cycling program incorrect	Eliminate inhibitor by purifying samples; use correct cycling program and make sure that all cycle parameters have been correctly entered
No Template Control (NTC)	Positive	DNA contamination in workflow	Eliminate sources of DNA contamination (reagents, plastics, etc.)

Figure 2. A typical amplification curve showing the amplification of a qPCR product.

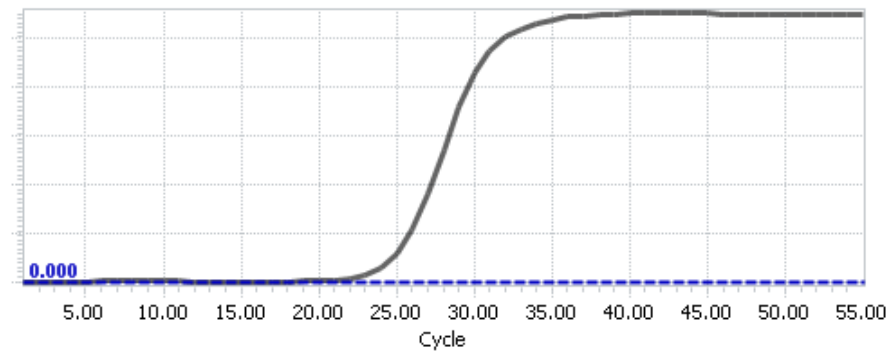
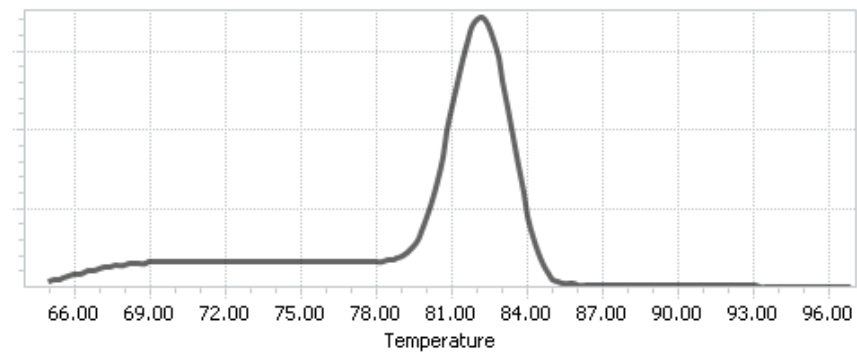


Figure 3. A typical melting peak of a qPCR product.



Quantification Method: Comparative $\Delta\Delta Cq$ (Quantification Cycle Value) Method

1. **Note:** Please refer to your qPCR instrument's data analysis software for data analysis. The method provided here serves as guidance for quick manual calculations.

You can use one or more housekeeping genes as a reference to normalize samples.

Important: We highly recommend using all 5 housekeeping genes included in this kit, β -actin, GAPDH, LDHA, NONO, and PPIH.

2. For a single housekeeping gene, ΔCq (ref) is the quantification cycle number change for that housekeeping gene (HKG) between an experimental sample and control sample.

$$\Delta Cq \text{ (ref)} = Cq \text{ (HKG, experimental sample)} - Cq \text{ (HKG, control sample)}$$

When using multiple housekeeping genes as a reference, we recommend normalizing using the geometric mean [1] of the expression level change, which is the same as normalizing using the arithmetic mean of ΔCq of the selected housekeeping genes.

$\Delta Cq \text{ (ref)} = \text{average} (\Delta Cq \text{ (HKG1)}, \Delta Cq \text{ (HKG2)}, \dots, \Delta Cq \text{ (HKG n)})$ (n is the number of housekeeping genes selected)

If using all 5 housekeeping genes included in this kit, β -actin, GAPDH, LDHA, NONO, and PPIH, use the following formula:

$$\Delta Cq \text{ (ref)} = (\Delta Cq(\beta\text{-actin}) + \Delta Cq(\text{GAPDH}) + \Delta Cq(\text{LDHA}) + \Delta Cq(\text{NONO}) + \Delta Cq(\text{PPIH})) / 5$$

Note: $\Delta Cq \text{ (HKG)} = Cq \text{ (HKG, experimental sample)} - Cq \text{ (HKG, control sample)}$, and $\Delta Cq \text{ (HKG)}$ value can be positive, 0, or negative.

3. For any of your genes of interest (GOI),

$$\Delta Cq \text{ (GOI)} = Cq \text{ (GOI, experimental sample)} - Cq \text{ (GOI, control sample)}$$

$$\Delta\Delta Cq = \Delta Cq \text{ (GOI)} - \Delta Cq \text{ (ref)}$$

$$\text{Normalized GOI expression level fold change} = 2^{-\Delta\Delta Cq}$$

References

[1] Vandesompele J, De Preter K, Pattyn F, Poppe B, Van Roy N, De Paepe A, Speleman F. (2002) "Accurate normalization of real-time quantitative RT-PCR data by geometric averaging of multiple internal control genes." *Genome Biol.* 3(7): 1-12.

Example: Comparative $\Delta\Delta Cq$ (Quantification Cycle Value) Method

Table 3. Cq (Quantification Cycle) values of 2 genes-of-interest and 5 housekeeping genes obtained for experimental and control samples.

Samples	Genes of Interest		Housekeeping Genes				
	GOI1	GOI2	<i>β-actin</i>	<i>GAPDH</i>	<i>LDHA</i>	<i>NONO</i>	<i>PPIH</i>
Experimental	21.61	22.19	17.16	17.84	20.12	19.64	26.40
Control	33.13	26.47	18.20	18.48	20.57	19.50	26.55

$$\begin{aligned}\Delta Cq(\text{ref}) &= (\Delta Cq(\beta\text{-actin}) + \Delta Cq(\text{GAPDH}) + \Delta Cq(\text{LDHA}) + \Delta Cq(\text{NONO}) + \Delta Cq(\text{PPIH})) / 5 \\ &= ((17.16 - 18.20) + (17.84 - 18.48) + (20.12 - 20.57) + (19.64 - 19.50) + (26.40 - 26.55)) / 5 \\ &= -0.43\end{aligned}$$

$$\begin{aligned}\Delta Cq(\text{GOI1}) &= 21.61 - 33.13 \\ &= -11.52\end{aligned}$$

$$\begin{aligned}\Delta Cq(\text{GOI2}) &= 22.19 - 26.47 \\ &= -4.28\end{aligned}$$

$$\begin{aligned}\Delta\Delta Cq(\text{GOI1}) &= \Delta Cq(\text{GOI1}) - \Delta Cq(\text{ref}) \\ &= -11.52 - (-0.43) \\ &= -11.09\end{aligned}$$

$$\begin{aligned}\Delta\Delta Cq(\text{GOI2}) &= \Delta Cq(\text{GOI2}) - \Delta Cq(\text{ref}) \\ &= -4.28 - (-0.43) \\ &= -3.85\end{aligned}$$

$$\begin{aligned}\text{Normalized GOI1 expression level fold change} &= 2^{-\Delta\Delta Cq(\text{GOI1})} \\ &= 2^{11.09} \\ &= 2180\end{aligned}$$

$$\begin{aligned}\text{Normalized GOI2 expression level fold change} &= 2^{-\Delta\Delta Cq(\text{GOI2})} \\ &= 2^{3.85} \\ &= 14.4\end{aligned}$$

Conclusion: Upon treatment, expression level of GOI1 increased 2,180 fold, and expression level of GOI2 increased 14.4 fold.



**GeneQuery™ Human Preadipocyte Cell Biology qPCR Array Kit
(GQH-PAD)
Catalog #GK103**

GeneQuery™ Human Preadipocyte Cell Biology qPCR Array Plate Layout*
(8 controls in Bold and Italic)

Note: all gene names follow their official symbols by HGNC

	1	2	3	4	5	6	7	8	9	10	11	12
A	ACSL1	CDK4	DES	FAP	HMGA2	KLF15	LTBP1	MMP3	PRDM16	SLC7A10	TMEM26	<i>ACTB</i>
B	ADD1	CEBPA	DGAT2	FASLG	HOXC8	KLF2	LYRM1	P2RX5	PROKR1	SMAD2	TNF	<i>GAPDH</i>
C	ADIPOQ	CEBPB	DLK1	FFAR4	HOXC9	KLF5	MAPK1	PDGFA	PTGR1	SMAD4	TNFSF10	<i>LDHA</i>
D	ADRB2	CIDEA	DPP4	FGF5	IGF1	LBP	MAPK3	PDGFRA	RUNX2	SOCS1	UCP1	<i>NONO</i>
E	ADRB3	COL1A1	EWSR1	FTO	IL4	LEP	MC4R	PLIN2	SDC3	SOCS3	UCP3	<i>PPIH</i>
F	AGRP	COL1A2	FABP4	FUS	INPPL1	LIPC	MDM2	PNPLA2	SIM1	SREBF1	VIM	<i>GDC</i>
G	CARTPT	COL6A3	FABP5	GATA3	INSR	LIPE	MMP1	POMC	SLC2A4	TBX1	WISP2	<i>PPC</i>
H	CCND1	DDIT3	FABP7	GLI3	KITLG	LPL	MMP2	PPARG	SLC36A2	TGFB1	WNT5A	<i>NTC</i>

* gene selection may be updated based on new research and development

Appendix. Plate type choice chart.

Plate type A

Brand	Model	kit catalog #
ABI / Life Tech	ABI 5700	GK103-A
	ABI 7000	GK103-A
	ABI 7300	GK103-A
	ABI 7500	GK103-A
	ABI 7700	GK103-A
	ABI 7900 HT	GK103-A
	QuantStudio	GK103-A
	ViiA 7	GK103-A
Bio-Rad	Chromo4	GK103-A
	iCycler	GK103-A
	iQ5	GK103-A
	MyiQ	GK103-A
	MyiQ2	GK103-A
Eppendorf / Life Tech	Matercyler ep realplex 2	GK103-A
	Matercyler ep realplex 4	GK103-A
Stratagene	MX3000P	GK103-A
	MX3005P	GK103-A

Plate type B

Brand	Model	kit catalog #
ABI / Life Tech	ABI 7500 Fast	GK103-B
	ABI 7900 HT Fast	GK103-B
	QuantStudio Fast	GK103-B
	StepOnePlus	GK103-B
	ViiA 7 Fast	GK103-B
Bio-Rad	CFX Connect	GK103-B
	CFX96	GK103-B
	DNA Engine Opticon 2	GK103-B
Stratagene	MX4000	GK103-B

Plate type C

Brand	Model	kit catalog #
Roche	Lightcycler 96	GK103-C
	Lightcycler 480 (96-well)	GK103-C